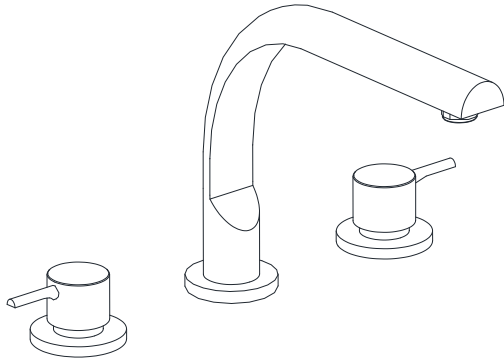


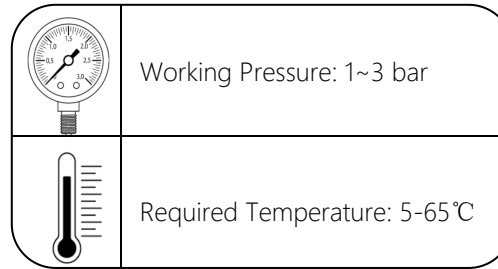


3-Hole Basin Mixer Round Spout without Popup Waste System



* Representative image

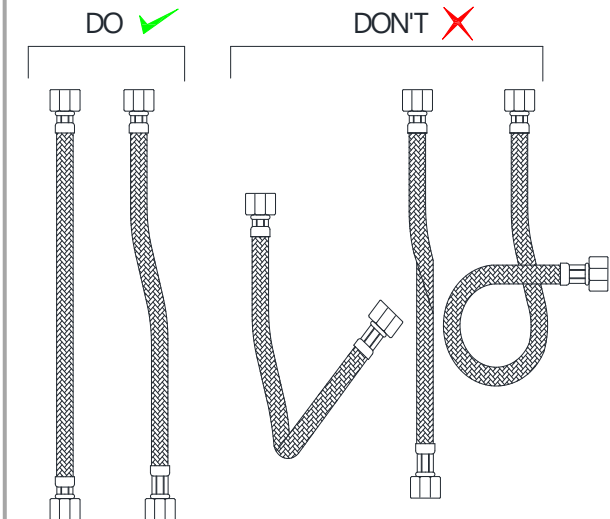
Temp & water pressure Requirement.



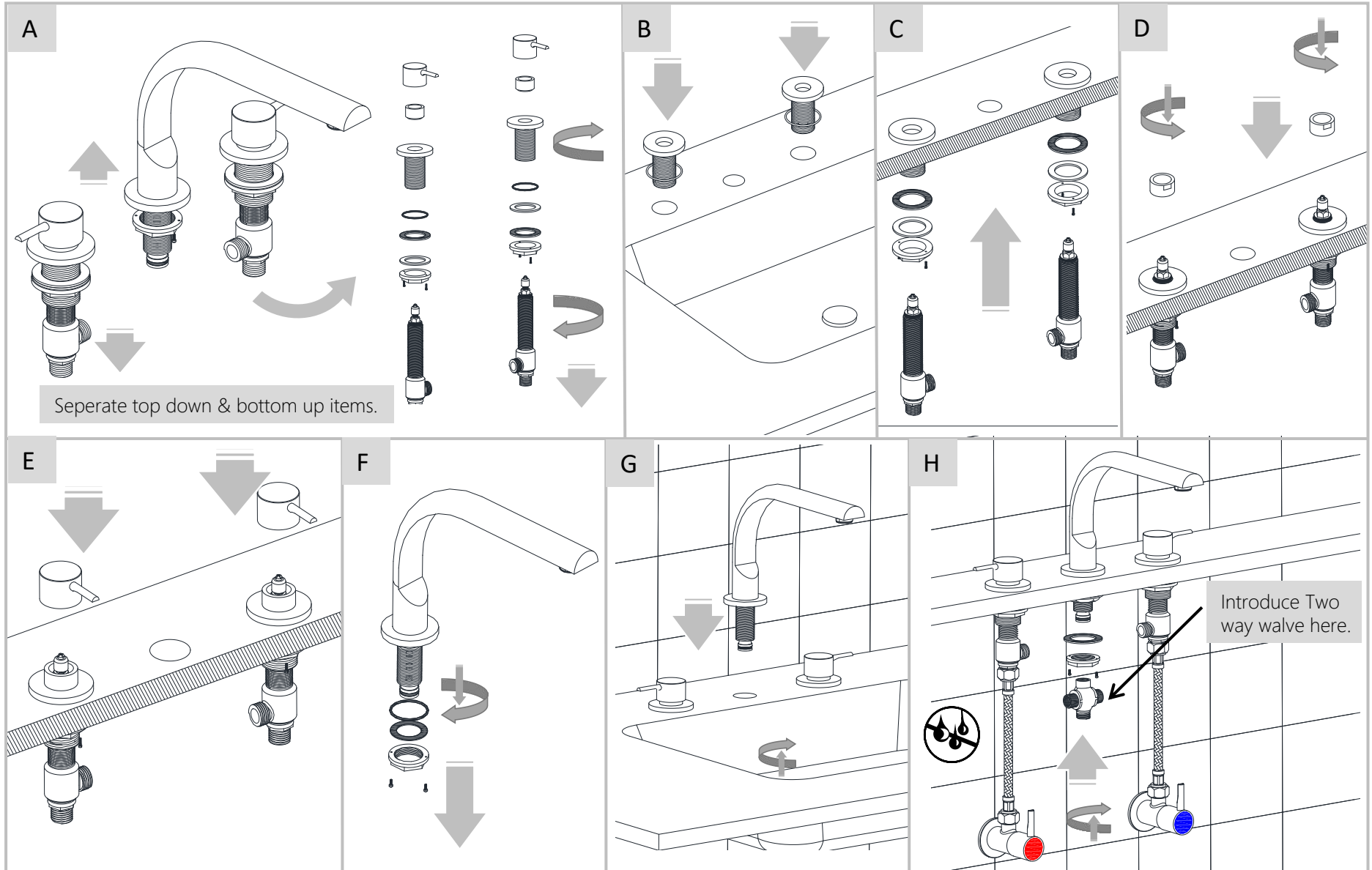
- **Working Pressure:-** The water pressure should be Between 1 and 3 bar for proper functioning.
- **Required Temperature:-** The water temperature within the range of 5-65° for safe & effective use.
- **Note:-** These are recommended values for achieving conventional /Optimum output.

Guideline for Braided hose Installation

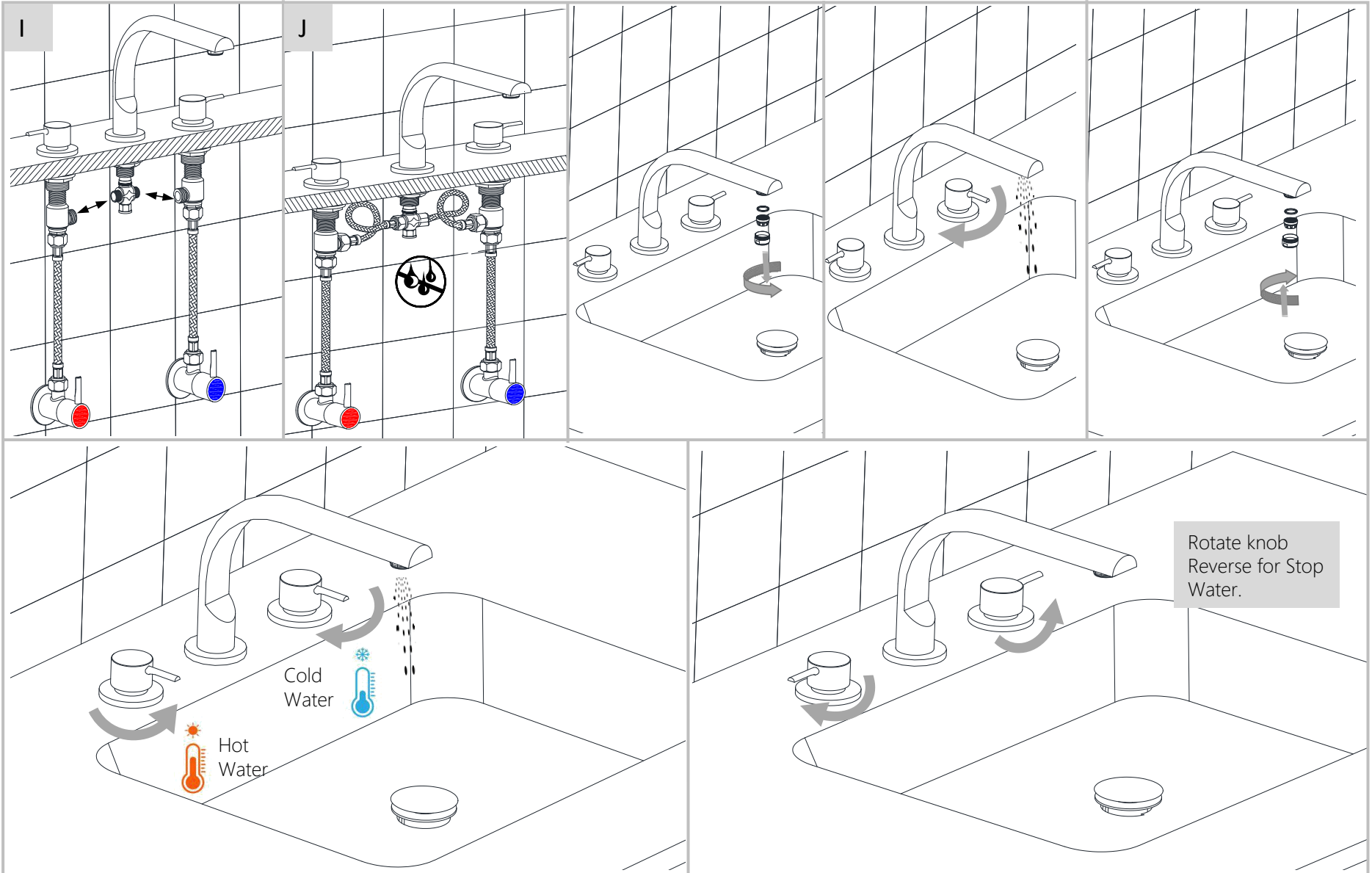
- Keep the hose straight as much as possible.
- Don't twist or bend hose during connection.
- Make sure hose is fully tighten to avoid any leakage.



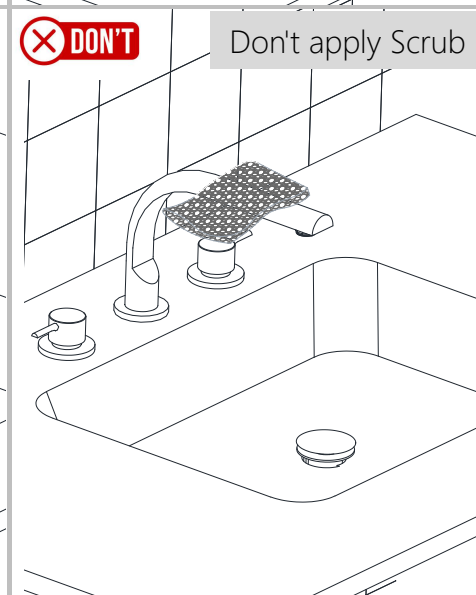
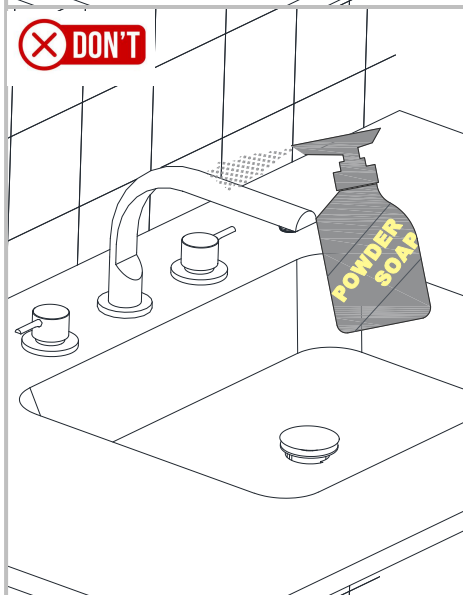
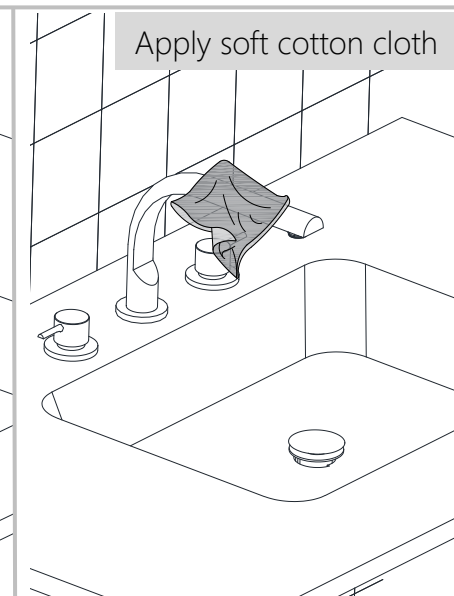
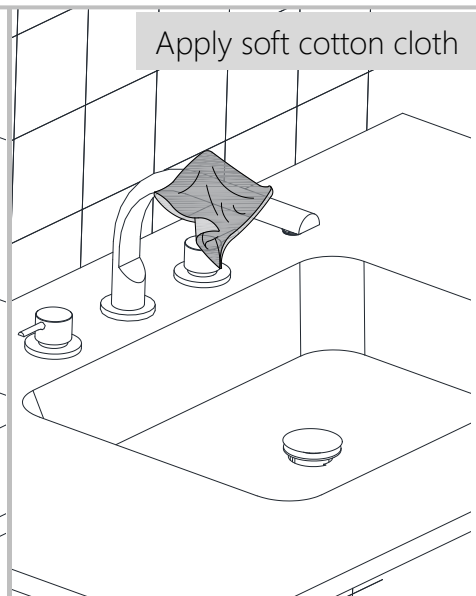
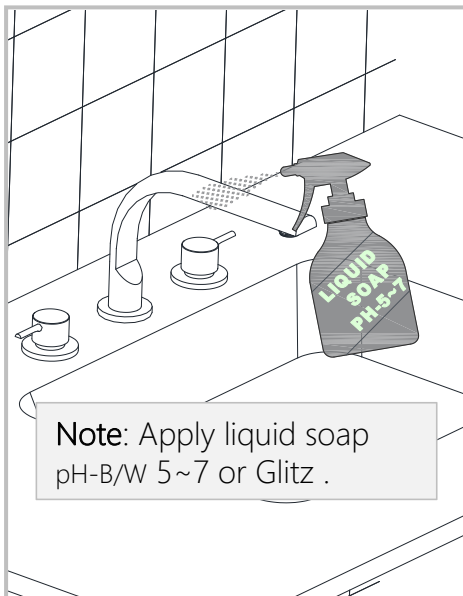
Note: THIS INSTALLATION MANUAL CAN BE REFERRED FOR ALL 3-HOLE BASIN MIXER WITH ROUND SPOUT WITHOUT POP-UP WASE.



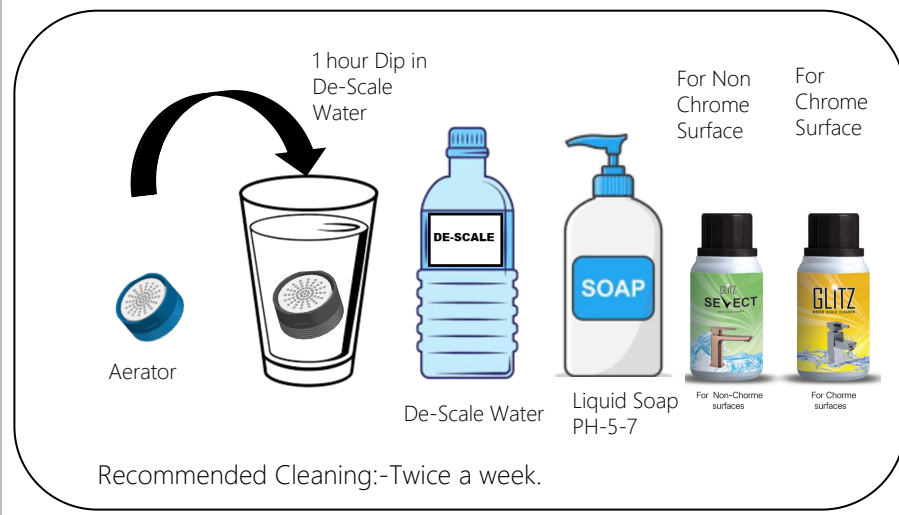
Note: THIS INSTALLATION MANUAL CAN BE REFERRED FOR ALL 3-HOLE BASIN MIXER WITH ROUND SPOUT WITHOUT POP-UP WASE.



Note: THIS INSTALLATION MANUAL CAN BE REFERRED FOR ALL 3-HOLE BASIN MIXER WITH ROUND SPOUT WITHOUT POP-UP WASE.



Steps & Cleaning agents requirements for Cleaning.



Note: THIS INSTALLATION MANUAL CAN BE REFERRED FOR ALL 3-HOLE BASIN MIXER WITH ROUND SPOUT WITHOUT POP-UP WASE.